

Capital Development Committee



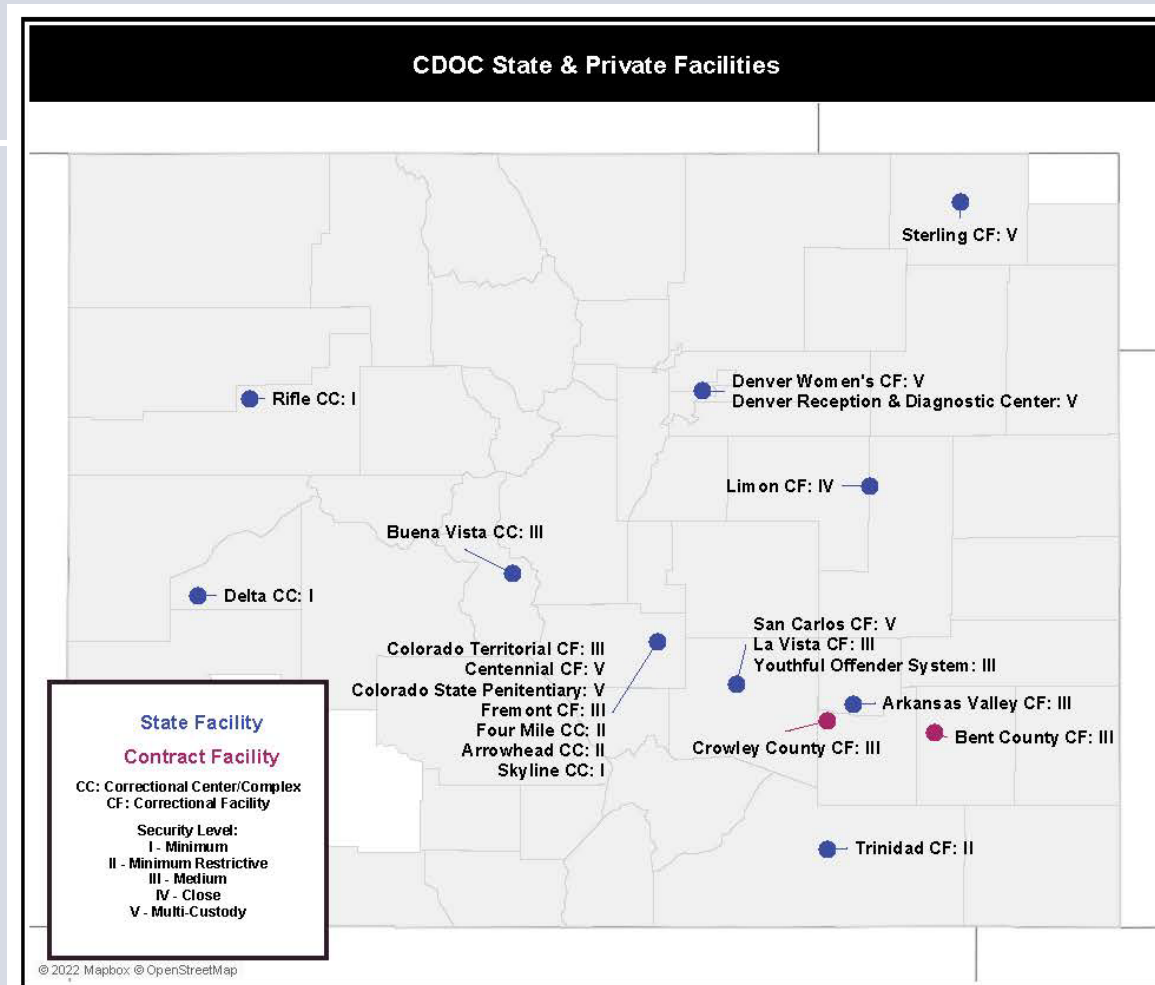
Colorado Department of Corrections Presentation & Testimony December 2024



Colorado Department of Corrections



Overview



Colorado Department of Corrections



Facility Facts



584 State Owned Buildings (6,900,653 SF)

- CCI Facilities
- 25 Leased Spaces (307,512 SF)
 - 19 Community Parole Offices
 - one is in a State building
 - Training Academy
 - Headquarters Offices
 - CMHI-P IGA's
 - CCI Surplus
- Total 7,208,165 SqFt



Colorado Territorial Correctional Facility
Security Tower



Colorado Department of Corrections

Facility Facts



- Buildings –
 - 29% over 50 years of age
 - 82% over 20 years of age
 - Range from 1871 to 2010
 - 47% infrastructure over 50 years of age
- Five Year Plans –
 - CC & CR-\$1,481,258,439 | 35 projects
 - CM-\$179,006,030 | 49 multi-phased projects
- Additional CC, CR & CM Projects –
 - \$593,613,767 | 59 projects
Not identified in five year plans
 - Does not include deferred maintenance below \$500k

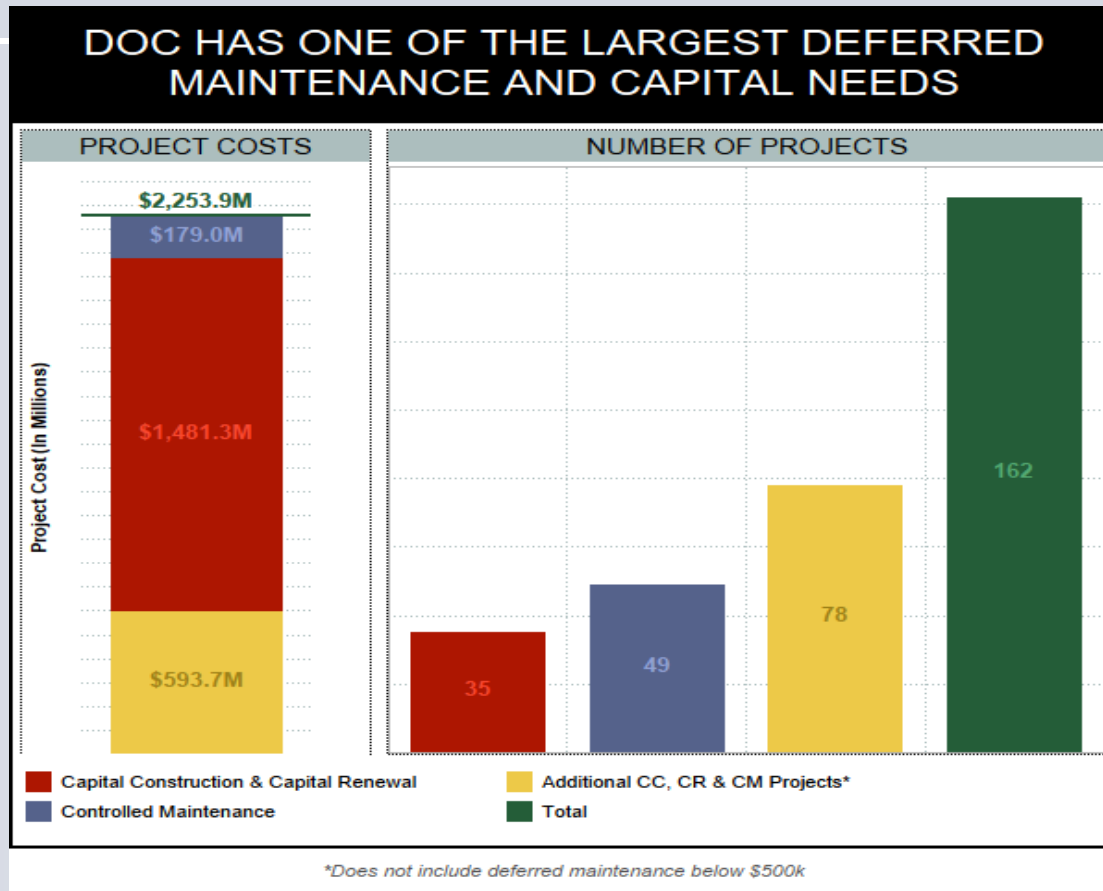


Colorado Territorial Correctional Facility
Original Main Entry details

Colorado Department of Corrections



Facility Facts



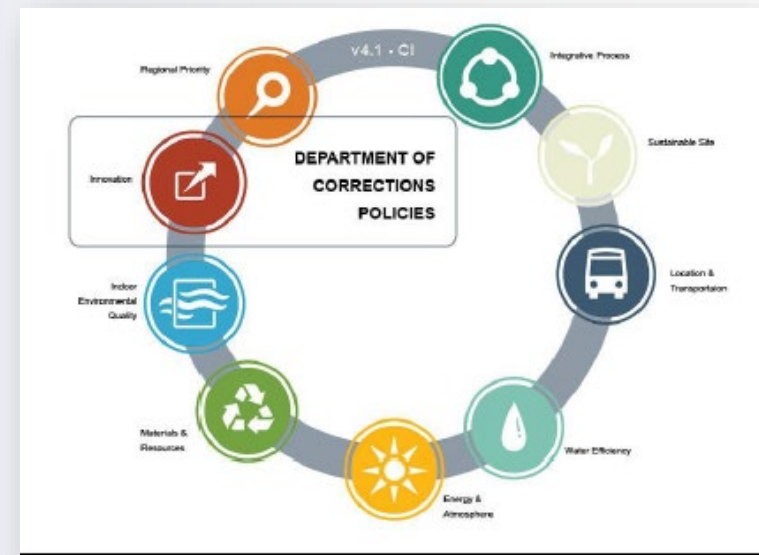
Colorado Department of Corrections



Facility Improvements



- Department Wide Impacts –
 - Recent CR & CM appropriations
 - Robust construction
 - Numerous projects completed
 - ADA improvements
 - Master Plan update
- Sustainability –
 - LEED certification for SCF Kitchen
 - New equipment efficiencies
 - Utility conservation measures
 - Water, electrical, non-potable water
- Other funding sources –
 - Broadband grants for TeleHealth
 - Extreme weather insurance claims



Sterling Correctional Facility
Kitchen Renovation LEED Process

Colorado Department of Corrections



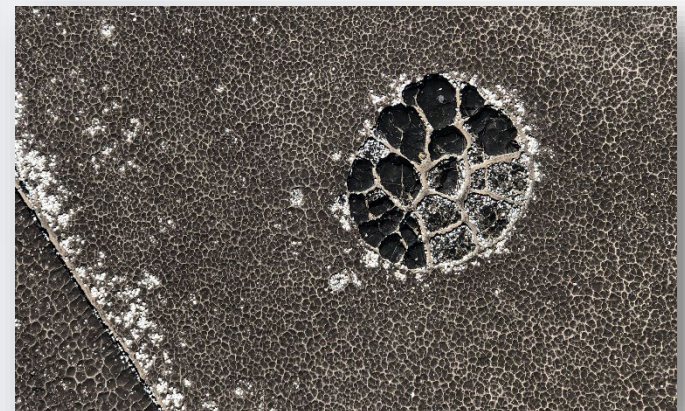
Facility Improvements



Sterling Correctional Facility
Steam condensate leaks damaged exterior soffit



Arkansas Valley Correctional Facility
Temporary water line patches



Trinidad Correctional Facility
Blistered roof membrane

Colorado Department of Corrections



Facility Improvements



FY 24 25 Funded Projects		Facts	
Project Type	Project	Funding	Project Status
Capital Renewal	SCF Access Controls - Phase 2 of 2	\$33,317,516.00	Bidding
Capital Renewal	SCF Steam Condensate Replacement - Phase 2 of 2	\$16,367,112.00	Construction
Controlled Maintenance	FCF Replace Kitchen Refrigeration System	\$1,440,092.00	Design
Controlled Maintenance	DCC Replace Living Unit & Support Building Roofs - Phase 3 of 3	\$1,923,384.00	Design
Controlled Maintenance	SCF Security Perimeter Improvements	\$1,417,984.00	Design
Total FY 24 25 Project Impacts		\$54,466,088.00	
FY 23 24 Funded Projects		Facts	
Project Type	Project	Funding	Project Status
Capital Renewal	SCF Access Controls Phase 1 of 2	\$9,396,262.00	Bidding
Capital Renewal	SCF Kitchen Renovation - Phase 2 of 2	\$48,525,082.00	Construction
Controlled Maintenance	DCC Replace Living Unit & Support Building Roofs - Phase 2 of 3	\$1,421,711.00	Construction
Controlled Maintenance	SCF Replace Minimum Center Roof - Phase 2 of 2	\$1,631,181.00	Construction
Controlled Maintenance	LCF Central Warehouse Freezer/Cooler Components	\$1,163,986.00	Construction
Controlled Maintenance	Denver Complex Central Warehouse Freezer/Cooler Components	\$761,391.00	Close Out
Controlled Maintenance	SCF Central Warehouse Freezer/Cooler Components	\$852,240.00	Close Out
Total FY 23 24 Project Impacts		\$63,751,853.00	
FY 22 23 Funded Projects		Facts	
Project Type	Project	Funding	Project Status
Capital Renewal	AVCF Utility Water Line Replacement	\$9,539,209.00	Construction
Capital Renewal	SCF Kitchen Renovation - Phase 1 of 2	\$2,800,000.00	Construction
Capital Renewal	ECCPC Water Tank Repair & Replacement	\$5,349,710.00	Construction
Capital Renewal	BVCF Sanitary Sewer Line Replacement	\$2,324,904.00	Construction
Capital Renewal	AVCF Critical Living Unit Shower/Drain & Toilet Room Improvements - Phase 1 of 2	\$12,402,937.00	Construction
Controlled Maintenance	BVCC Critical Security Improvements to Segregation Units - Phase 2 of 4	\$1,768,537.00	Construction
Controlled Maintenance	DCC Replace Living Unit & Support Building Roofs - Phase 1 of 3	\$1,689,002.00	Construction
Controlled Maintenance	RCC Replace Roofs	\$1,492,686.00	Close Out
Controlled Maintenance	TCF Replace Program & Support Building Roof	\$1,991,473.00	Close Out
Controlled Maintenance	SCF Replace Minimum Center Roof - Phase 1 of 2	\$1,109,909.00	Construction
Total FY 22 23 Project Impacts		\$40,468,367.00	
FY 20 21 Funded Projects		Facts	
Project Type	Project	Funding	Project Status
Capital Renewal	SCF Steam Condensate Line Replacement - Phase 1 of 2	\$8,487,496.00	Close Out
Controlled Maintenance	CTCF Critical Door Security Improvements	\$1,645,295.00	Close Out
Controlled Maintenance	BVCC Critical Security Improvements to Segregation Units - Phase 1 of 4	\$1,615,288.00	Close Out
Controlled Maintenance	CTCF Replace Administration Roof	\$1,058,021.00	Close Out
Total FY 20 21 Project Impacts		\$12,806,100.00	

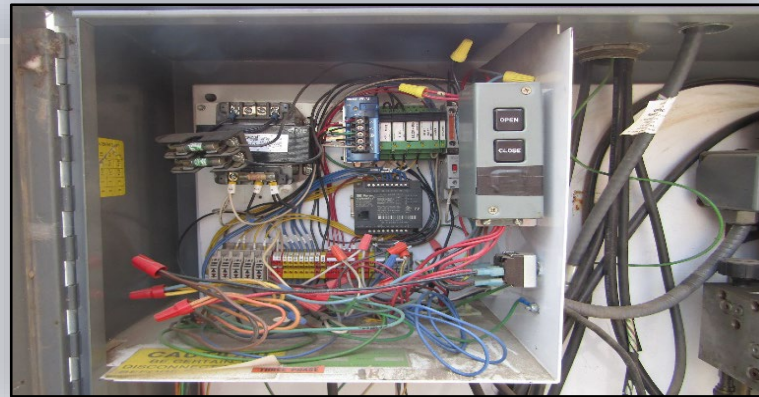
Colorado Department of Corrections



Ongoing Facility Needs



Denver Women's Correctional Facility
Roof conditions



Denver Women's Correctional Facility
Outdated Electronic Security Controls



Buena Vista Correctional Facility
Broken water line excavation

Colorado Department of Corrections



Submitted Projects



- Capital Construction | Capital Renewal –
 - \$191,664,742 - 9 projects
- Controlled Maintenance Projects –
 - \$30,990,755 - 12 projects
- Project Impacts –
 - Loss of Use
 - Life Safety | Security Impacts
 - Prolonged deferred maintenance typically results in system failure
 - 24/7/365 building use
- Goals –
 - Maintain facility operations
 - Protect & maintain State assets
 - Reduction of maintenance & utility costs



Arkansas Valley Correctional Facility
Corroded electrical & plumbing systems
resulting from shower drain leaks

Colorado Department of Corrections



DRDC Fire Protection System Replacement

OSPB Priority 2 | CDOC Priority 1



- Capital Renewal Request–
 - FY25|26 1st submission
 - \$21,333,662
 - 638 inmates - Level V Facility
 - Department intake facility plus infirmary & dialysis
 - Opened 1991
- Issues –
 - Failing fire detection & suppression system
 - Obsolete replacement components
 - System failure is a life safety & security risk
- Funding Provides –
 - Restores performance of this mission critical system
 - Eliminate further system damage
 - Restores staff confidence
- Consequences –
 - Facility loss of use
 - Complicated & compromised operations
 - Jeopardize staff, offender & public safety



Denver Reception & Diagnostic Center
Corroded fire suppression

Colorado Department of Corrections

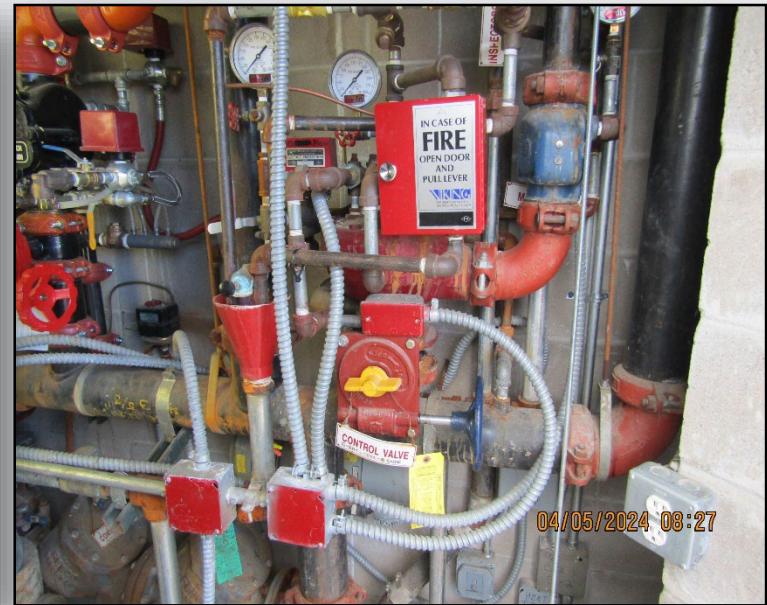


DRDC Fire Protection System Replacement

OSPB Priority 2 | CDOC Priority 1



Denver Reception & Diagnostic Center
Fire protection system valves



Denver Reception & Diagnostic Center
Fire protection system controls

Colorado Department of Corrections

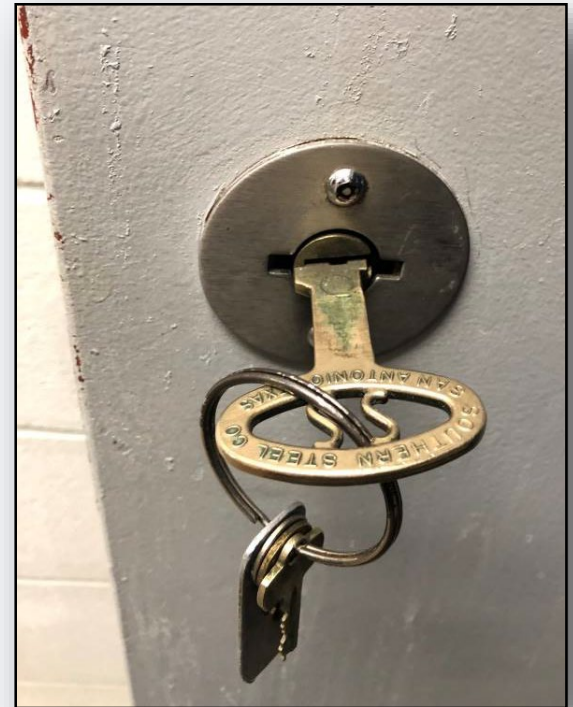


CSP Electronic Security System Replacement

OSPB Priority 15 | CDOC Priority 2



- Capital Renewal Request–
 - FY25|26 6th submission
 - \$8,955,324
 - 756 male offenders - Level V Facility
 - Opened 1993 with an addition in 1998
- Issues –
 - Failing door control system – faults, failures & outages
 - Unavailability of replacement components
 - System failure is a security & life safety risk
- Funding Provides –
 - Restores performance of this mission critical system
 - Eliminate further system damage
 - Restores staff confidence & eliminates temporary repairs
- Consequences –
 - Complicated & compromised security operations
 - Jeopardize staff, offender & public safety
 - Continued deterioration of security systems



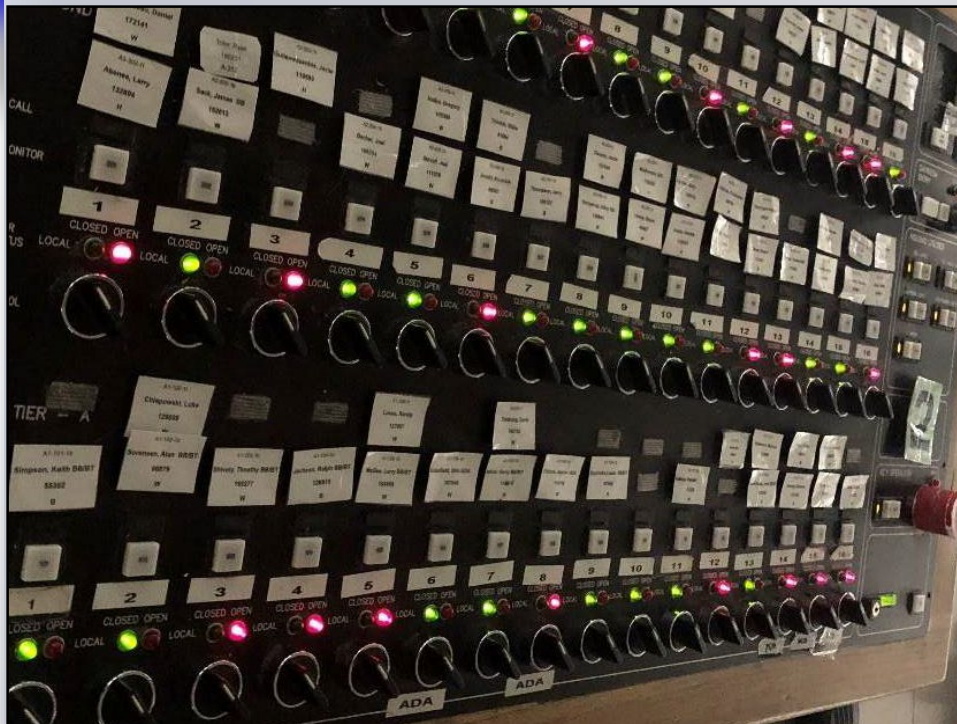
Colorado State Penitentiary
Key control operations

Colorado Department of Corrections



CSP Electronic Security System Replacement

OSPB Priority 15 | CDOC Priority 2



Colorado State Penitentiary
Access control board



Colorado State Penitentiary
Antiquated control panel

Colorado Department of Corrections

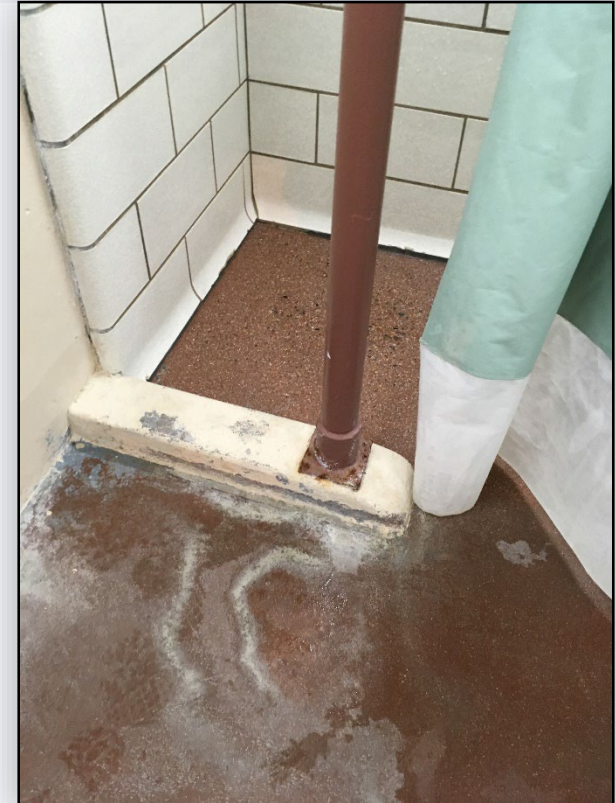




Other Project Submittals

OSPB Un-Prioritized Projects

- AVCF Critical Living Unit Shower, Drain & Toilet Room Improvements – Phase 2 of 2
 - OSPB 16 | CDOC Priority 3
 - FY25|26 first submission as Phase 2 of 2
 - \$17,237,855
 - 1,105 male Level III Facility
 - Opened 1987
- ECCPC Electrical Distribution Infrastructure Replacement –
 - OSPB 18 | CDOC Priority 8
 - FY25|26 6th submission
 - \$29,510,506
 - Serves 6 correctional facilities plus CCI
 - 5,400 acres with 244 buildings
- FCF Fire Alarm Improvements –
 - OSPB 19 | CDOC Priority 6
 - FY25|26 2nd submission
 - \$15,951,352
 - 1,683 male Level III Facility
 - Opened 1957



Arkansas Valley Correctional Facility
Shower degradation

Colorado Department of Corrections





Other Project Submittals

OSPB Un-Prioritized Projects



East Canon City Prison Complex
Electrical distribution conditions



Fremont Correctional Facility
Fire alarm distribution conditions

Colorado Department of Corrections





Other Project Submittals

OSPB Un-Prioritized Projects

- AVCF Electronic Security Improvements –
 - OSPB 20 | CDOC Priority 7
 - FY24|25 1st submission new scope
 - \$28,374,454
 - 1,105 male Level III Facility
 - Opened 1987
- FCF Primary & Secondary Electrical Replacement
 - OSPB 22 | CDOC Priority 4
 - FY25|26 3rd submission
 - \$51,867,516
 - 1,683 male Level III Facility
 - Opened 1957
- TCF Waste Water Treatment Facility Improvements
 - OSPB 23 | CDOC Priority 5
 - FY25|26 2nd submission
 - \$22,430,162
 - 508 male Level II Facility
 - Opened 1998



Arkansas Valley Correctional Facility
Electrical door controls conditions

Colorado Department of Corrections





Other Project Submittals

OSPB Un-Prioritized Projects



Fremont Correctional Facility
Electrical Panel Distribution



Trinidad Correctional Facility
WWTF treatment pond condition

Colorado Department of Corrections

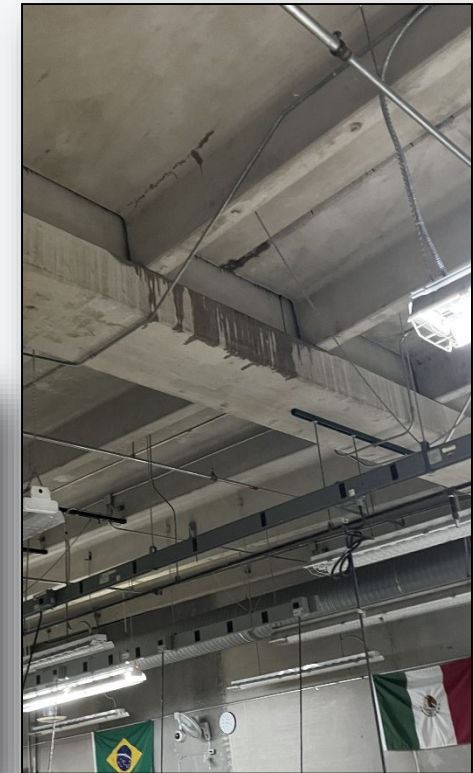




Other Project Submittals

OSPB Un-Prioritized Projects

- LCF Support Roof Replacement -
 - OSPB 31 | CDOC Priority 9
 - FY25|26 2nd submission
 - \$6,003,911
 - 1,234 male Level III Facility
 - Opened 1991
 - Priority removed due to recent insurance funding from June 2023 extreme weather event



Colorado Department of Corrections

Limon Correctional Facility
Roof leaks, containment & deflection



Summary



- Department of Corrections –
 - Largest Agency Building Inventory
 - Oldest Buildings
 - Aging infrastructure
 - 24/7/365 Operations & Building Use
 - Safety of inmates, staff & public
 - Defend in place facilities
- Project Impacts -
 - Avoid Loss of Use
 - Increase low OSA & DoRM Facility Condition Index (FCI)
 - Maintenance is critical
 - Prolonged deferred maintenance typically results in system failure
- Goals –
 - Sustain facility operations
 - Protect & maintain State assets
 - Reduce maintenance & utility costs



Buena Vista Correctional Facility
Failed roof conditions

Colorado Department of Corrections



Questions & Final Remarks



Colorado Department of Corrections