



Campus Transformations

Presentation to the Capital Development Committee

December 16, 2024

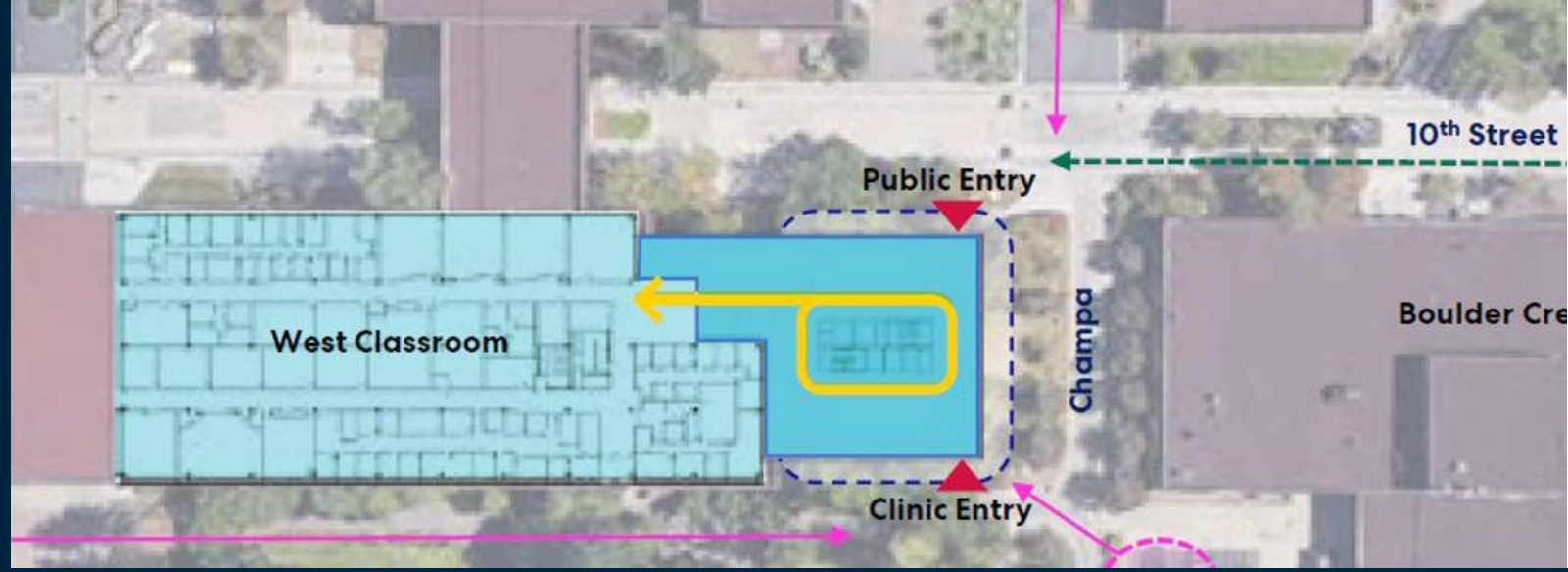


Interprofessional Simulation and Skills Labs

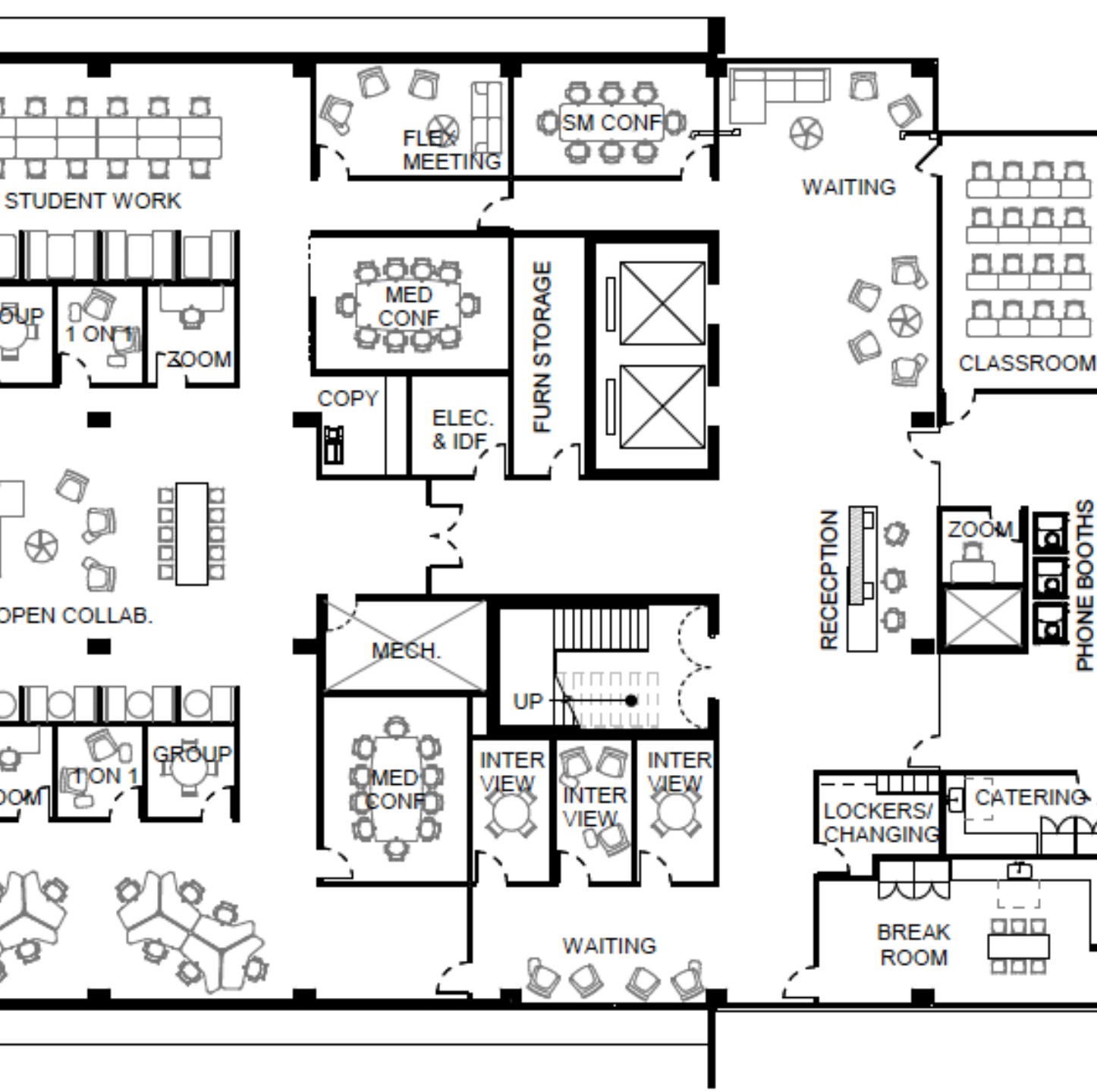
- Opened August 2024
- Serves 10 academic departments
- 8 simulation rooms, 2 skills training labs, a home health suite and an ambulance bay



Gina and Frank Day Health Institute Tower



- Will serve 7,000 Roadrunners in health-related majors by 2030 (25% growth)
- 70,000 square feet for classrooms, labs, learning spaces
- Open Fall 2027



Classroom to Career Hub (C2 Hub)

- Serves MSU Denver and CCD students
- 25,000 square feet for career planning, industry industry engagement
- Open Fall 2027





Thank you!